



ARCHITECTURAL  
SOLUTIONS

**NINELINE**

Architectural  
Wall Cladding



**NINELINE™ Batten**

 **STRATCO**



## **NINELINE™ Batten**

**Achieve the visual of a repeated batten system on a wall, all through a single integrated product.**

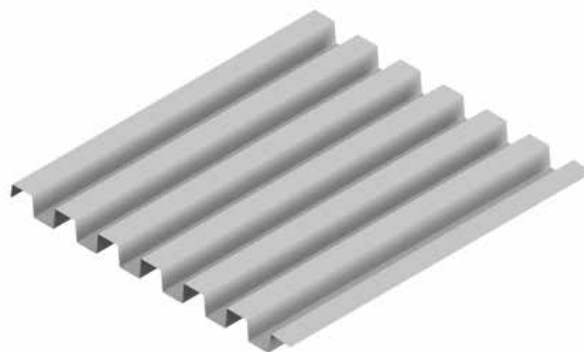
With its 45mm rib height and bold lines, Batten's application will prove versatile as the profile sits comfortable in both commercial and residential architecture, complementing traditionally specified materials.



#### **Features at a glance:**

---

- Rib Height: 45mm
  - Coverage: 642mm
  - BMT: 0.55mm
  - Fixing Method: Pierced Fix
  - Maximum Length: 6.0m
  - Minimum Length: 0.3m
  - Available in Colorbond® Standard, Matt Finish, ULTRA, Metallic and Stratco Bronze.
- 





# NINELINE™ Batten

**TECHNICAL INFORMATION:**

For all specification and detailing information scan the QR code.



**APPLICATION:**

- Wall cladding
- Sheds



1300 288 598 | [stratco-arc.com.au](http://stratco-arc.com.au)

Scan this QR code to



find a Stratco near you.



The information contained within this brochure is for general use and information only. Stratco Australia recommends that you obtain appropriate expert advice confirming the suitability of product(s) and information in relation to the proposed application.

All brand names, images accompanied by © or ™ remain the property of Stratco Australia.