

**YOU BRING THE PASSION,  
WE'LL BRING THE  
How To.**



**FLAT & GABLE SHEDS**

DOMESTIC | RURAL | INDUSTRIAL

# FLAT & GABLE ROOF SHEDS

## GABLE ROOF SHEDS

Form and function come together in the classic shape of the Gable Roof Shed. Featuring an extremely practical pitched roof, the Gable Roof Shed range takes full advantage of the floor space available. More than just a timeless design, a pitched roof minimises heat build-up and increases your storage space on the inside, and delivers the benefits of a self-cleaning shape on the outside.

The frame of a Gable Roof Shed is constructed using strong, galvanised C-section purlins. Hi-tensile bolted eaves and ridge connection brackets provide a seamless portal frame structure and are engineered to provide additional torsional strength. The shed roof is clad with traditional corrugated steel in a choice of single or double sided colour and comes standard with gutters and downpipes. The wall cladding is Superdek® sheeting which is a durable and hard-wearing sheet due to the 28mm high ribs in its profile. The sheeting on the gable wall for standard Domestic 15° Gable Sheds is pre-cut to fit the gable shape for easy installation.

Gable Roof Sheds are available in a wide range of colours. Select either sliding doors or roller doors. If the side of the shed is to be built on a boundary, internal box gutters can be ordered. Optional extras include windows, skylights and a personal access door. Roller doors can be fitted with remote controlled door openers and the walls can be ordered in a corrugated profile for a different appearance.

## GABLE ROOF SIZES

Gable Roof Sheds are available in two categories; Domestic 15° Sheds up to 6.9 metres wide, and Rural and Industrial 10° Sheds from 6.9 to 15.4 metres wide that range from two bays, up to an endless number of extra bays.



*"Stratco Sheds combine form and function with quality manufacturing to deliver sheds that last the distance"*

## HIGH QUALITY STORAGE AND PROTECTION SOLUTIONS

### DOMESTIC 15° GABLE SHEDS

Domestic Gable Roof Sheds feature 18 sizes, based on two single size widths and three double size widths. There are three heights of 2.4m, 2.7m and 3.0m to choose from.

### RURAL & INDUSTRIAL 10° GABLE SHEDS

Rural and Industrial Sheds feature 11 standard widths and 11 standard lengths which are available in two different shed bay sizes of 3.05m and 3.81m. Two additional wall height options of 3.6m and 4.2m are available for higher door clearances. Non-standard options include; widths up to 15.4m, endless non-standard length options, heights up to 4.2m, and 5.0m bay options for a wider door opening are available on request.



### WE'VE GOT STORAGE HOW TO.

Talk to our shed experts to sort out your outdoor storage needs. Everything you need to know to is in our head.

Just tell us what's in yours and we'll make it happen



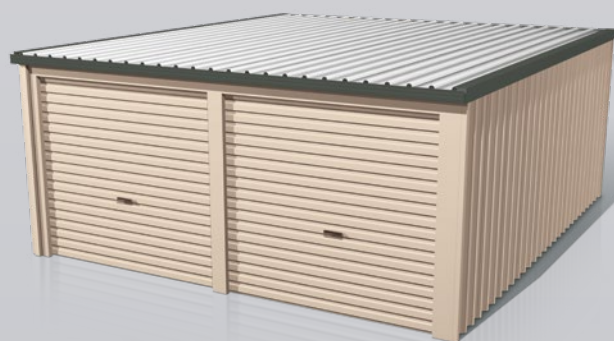
### FLAT ROOF SHEDS

Simple, clean and understated lines are a feature of the practical and economical Flat Roof Shed. With a wide range of sizes to choose from, there is a Flat Roof Shed to suit every storage requirement.

The range starts with a large garden shed named the Potter, which is a robust, practical shed. After the Potter the Flat Roof Shed becomes a true garage with roller doors fitted as standard.

Available in a wide range of colours, Flat Roof Sheds come standard with gutters and downpipes. The roof and walls are clad with Prodek® steel sheeting. Single sided colour is used on the walls, while the roof is unpainted zinc/al. Deep 50mm ribs in the Prodek profile make it strong and durable - this allows the inside of the shed to have a clean, uncluttered appearance without the need for support rails.

Options include windows, a personal access door, a coloured roof and dust resistant foam strips to fill any gaps. The roller doors can be fitted with a remote controlled door opener. Sheds are available for options of posts embedded into concrete footings or fixed to a concrete slab.



### FLAT ROOF SIZES

Flat Roof Sheds have 13 different sizes. There are seven single sized sheds and six double sized sheds. The Potter has a wall height of 2.1m, while the rest of the Flat Roof Range have two wall heights of 2.4m and 2.7m. All Flat Roof Sheds, except for the Potter, are available with the Handiman Extension, which adds an extra two metres to the length of the shed. When storing a vehicle, the Handiman Extension gives you the extra room for further storage on the back wall. The adjacent table provides a full list of the dimensions.

## DIMENSIONS

### FLAT ROOF SHED

| Type   | Name         | Width  | Length | Length with Handiman Extension |
|--------|--------------|--------|--------|--------------------------------|
| SINGLE | Potter       | 3355mm | 4110mm | -                              |
|        | Universal    | 3460mm | 5960mm | 7910mm                         |
|        | Spacemaster  | 4110mm | 5960mm | 7910mm                         |
|        | Workshop     | 4765mm | 5960mm | 7910mm                         |
| DOUBLE | Duo          | 5415mm | 5960mm | 7910mm                         |
|        | All Rounder  | 6015mm | 5960mm | 7910mm                         |
|        | Leisure King | 6715mm | 5960mm | 7910mm                         |

### DOMESTIC GABLE ROOF - 15° SHED RANGE

| Type   | Name    | Width  | Lengths Available |        |        |         |
|--------|---------|--------|-------------------|--------|--------|---------|
| SINGLE | Stubbie | 3160mm | 3160mm            | -      | -      | -       |
|        | Gem     | 3160mm | 6210mm            | 7730mm | 9260mm | -       |
|        | Compact | 3920mm | 6210mm            | 7730mm | 9260mm | -       |
| DOUBLE | Family  | 5450mm | 6210mm            | 7730mm | 9260mm | 12300mm |
|        | Deluxe  | 6210mm | 6210mm            | 7730mm | 9260mm | 12300mm |
|        | Jumbo   | 6970mm | 6210mm            | 7730mm | 9260mm | 12300mm |

### RURAL & INDUSTRIAL GABLE ROOF - 10° SHED RANGE

Five shed heights of 2400mm, 2700mm, 3000mm, 3600mm, 4200mm.  
 Non-Standard shed heights up to 4200mm high are also available.  
 Total length must be greater than total width of shed.

| Width (mm)         | Lengths Available (mm) |      |       |       |       |       |       |       |       |       |       |
|--------------------|------------------------|------|-------|-------|-------|-------|-------|-------|-------|-------|-------|
|                    | 7750                   | 9265 | 11560 | 12310 | 15355 | 15365 | 18400 | 19175 | 21445 | 22985 | 26790 |
| 7730               | ✓                      | ✓    | ✓     | ✓     | ✓     | ✓     | ✓     | ✓     | ✓     | ✓     | ✓     |
| 8490               | -                      | ✓    | ✓     | ✓     | ✓     | ✓     | ✓     | ✓     | ✓     | ✓     | ✓     |
| 9255               | -                      | ✓    | ✓     | ✓     | ✓     | ✓     | ✓     | ✓     | ✓     | ✓     | ✓     |
| 10015              | -                      | -    | ✓     | ✓     | ✓     | ✓     | ✓     | ✓     | ✓     | ✓     | ✓     |
| 10780              | -                      | -    | ✓     | ✓     | ✓     | ✓     | ✓     | ✓     | ✓     | ✓     | ✓     |
| 11540              | -                      | -    | ✓     | ✓     | ✓     | ✓     | ✓     | ✓     | ✓     | ✓     | ✓     |
| 12300              | -                      | -    | -     | ✓     | ✓     | ✓     | ✓     | ✓     | ✓     | ✓     | ✓     |
| 13065              | -                      | -    | -     | -     | ✓     | ✓     | ✓     | ✓     | ✓     | ✓     | ✓     |
| 13825              | -                      | -    | -     | -     | ✓     | ✓     | ✓     | ✓     | ✓     | ✓     | ✓     |
| 14590              | -                      | -    | -     | -     | ✓     | ✓     | ✓     | ✓     | ✓     | ✓     | ✓     |
| 15350              | -                      | -    | -     | -     | ✓     | ✓     | ✓     | ✓     | ✓     | ✓     | ✓     |
| <b>No. of Bays</b> | 2                      | 3    | 3     | 4     | 5     | 4     | 6     | 5     | 7     | 6     | 7     |

## ENGINEERED FOR STRUCTURAL INTEGRITY

Recognised, independent structural engineers have certified all tests and calculations carried out on the Flat and Gable Roof Shed range. This is your guarantee of structural integrity. Domestic 15° Gable and Flat Roof Sheds of all sizes and styles are suitable for use in wind speed areas of W28 (N1) and W33 (N2). All Domestic Gable Roof Sheds and only single Flat Roof Sheds are available in W41 (N3). Large Span 10° Gable Roof Sheds are designed to suit Region A, terrain category 2 and 3, Region B, terrain category 2 and 3 and sub-alpine regions. All Flat Roof, Domestic and Large Span Gable Roof Sheds are designed for non-cyclonic areas. For cyclonic rated sheds please refer to the Cyclonic Gable Roof Shed section on the Stratco website.

## SHED INSTALLATION

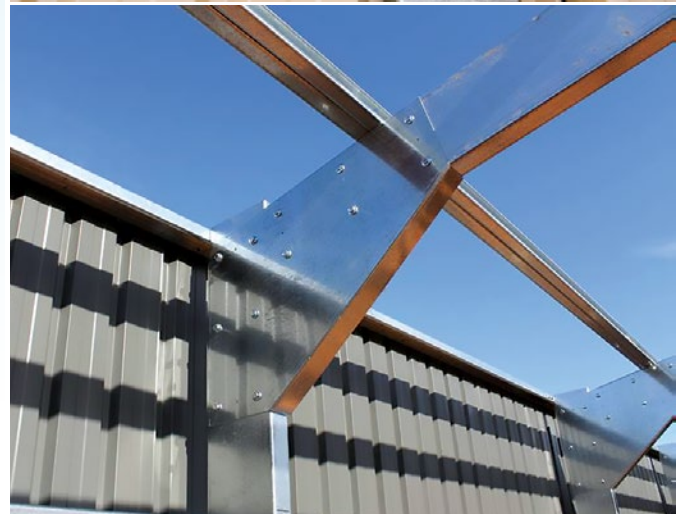
Stratco Flat and Gable Roof Sheds are designed to be the ideal do-it-yourself project and easy to follow installation instructions are available. Stratco can also provide a list of qualified shed installers to complete the job for you.

## FEATURES OF THE SHED RANGE

- Choose from two attractive designs; the Gable Roof and Flat Roof.
- Choice of 'into' concrete footings or 'onto' concrete slab attachment.
- Available in a huge range of sizes and several wall heights.
- Massive 10° Large Span Gable Roof Sheds with endless non-standard length options.
- Pick from an exceptional range of modern colours.
- Select either roller doors or sliding doors on Gable Roof Sheds.
- Complete the package with an impressive range of accessories.
- Stratco can provide the information to fast track your council approval.
- Designed and tested to comply with all relevant building standards.
- Gable Roof Sheds are constructed using strong and secure galvanised C-section portal frames.
- Gable Roof Shed C-section purlins and girts provide additional strength and conceal all fasteners.
- Pre-cut sheeting and pre-cut and pre-punched framework for easy installation.
- Easy do-it-yourself construction with all the installation instructions provided.
- A list of qualified installers that can build your shed.
- A range of payment options are available.
- Stratco Sheds are a market leading, quality product.

## MAINTENANCE

Your Stratco Shed will maintain its good looks for even longer with a simple wash and wipe down with a soft broom. Stratco Sheds are produced from the highest quality materials and will provide many years of service if the important recommendations set out in the Stratco 'Selection, Use and Maintenance' brochure are followed.





SHED QUARTERS



« SCAN THIS QR CODE TO FIND A STRATCO NEAR YOU

1300 155 155  
stratco.com.au

All brands and logos/images accompanied by © or ™ are trade marks of Stratco (Australia) Pty Limited. © Copyright May 2014

How To.

